

LUMUX

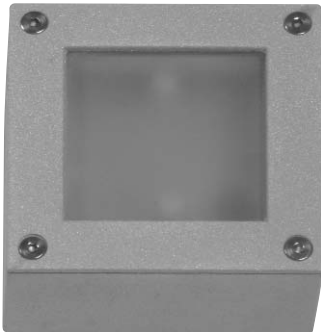
Date :

Project :

Type:

Agency :

Distributor :



Description : ADA surface mounted luminaire for low level illumination application. Constructed from low copper aluminum die-cast. Suitable for wet locations. Tempered frosted glass diffuser. High corrosion resistant polyester powder coat finish. Vandal resistant stainless steel screws. Specify any RAL. ETL listed for wet locations.

SPECIFICATION:

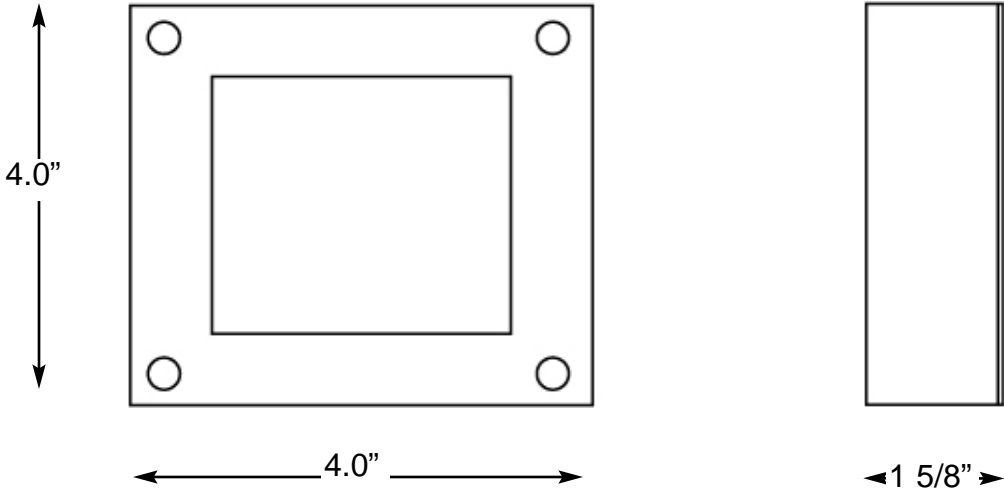
Housing : Low copper aluminum die cast.
Vandal resistance stainless steel screws.
Silicon gasketed for weather tight operation.

Diffuser : Frosty glass.

Electrical : Voltage : 12 - 120 / 277
Lamp: Halogen (12 volt or 120/277 volt), LED (120 volt only)
Socket : G4 (For Halogen lamp)
Ballast : Class P, Electronic Ballast

Installation:
Unit will surface mount via (2) provided holes in the bottom of the fixture 3 1/4" diagonally seperated.

DIMENSIONS:



Lumux - SLS200

Lumux reserves the right to modify the above details to reflect changes in the cost of materials and/or design without prior notice.

Lumux Lighting Inc	877-895-5552	Rev : A	Drawing Number SLS200
--------------------	--------------	---------	--------------------------

LUMUX

Date :

Project :

Type:

Agency :

Distributor :

ORDERING GUIDE:

SLS200 / XXX / XXX / xxx

G4
LED *

12v
120
277

White
Black
Silver
Bronze
RAL
(optional)

* LED has integral driver @ 120 volt

Lumux - SLS200

PROJECT NOTES:

Comments

Approval

Lumux reserves the right to modify the above details to reflect changes in the cost of materials and/or design without prior notice.

Lumux Lighting Inc

877-895-5552

Rev :A

Drawing Number
SLS200