

Description

Our first model of our NEW interior stainless steel LED driven Down Light series. High performance Architectural Grade Recessed Luminaires. Versatile & practical recessed housing designed with two 13-3/4" to 24-1/2" adjustable bar hangers with captive nails are included on the frame. Bar hangers are parallel to junction box, but can be repositioned 90 degrees. Lumux designed LED circuits and drivers guarantees a consistent and highly efficient circuitry for Architectural illumination. DL100 series utilizes CREE 1 watt high output LEDs, which are designed in USA. DL100 series could be specified for dramatic space enhancing illumination effects. These luminaires inherit the long life (50,000 Hrs), energy efficiency and Non UV dissemination of LED light sources. ETL listed for wet locations.

Rev : A	Date :
---------	--------

Project :	Type:
-----------	-------

Agency :

Distributor :

Specification Features

Construction

Galvanized sheet metal Recessed housing with Stainless Steel Grill and low copper aluminum die cast body. All fasteners are stainless steel.

Electrical

CREE , 1 watt 80 Lumen / Watt LED.
Unit comes with its integral 120 volt or 277 volt driver.

Diffuser

Frosty glass.

Finish

Stainless steel.

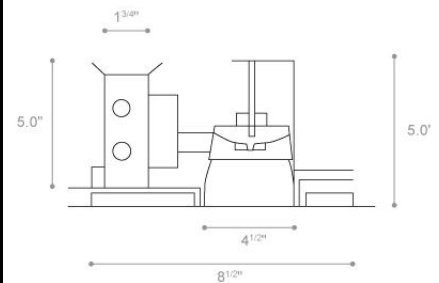
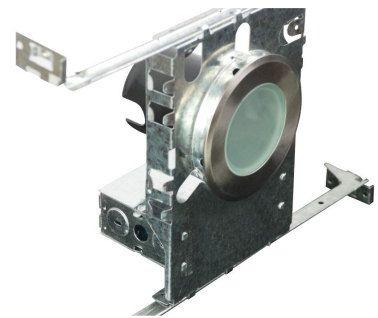
Installation

Recessed ceiling mount with 2 bar hangers.

Ordering Guide

	Lamp	/	Voltage	/	Finish	/	Option
DL100 /	3 LED 6 LED		120 277		Stainless Steel		

DL100



LED
3 LED
6 LED
1 watt, 80 lumen LED.